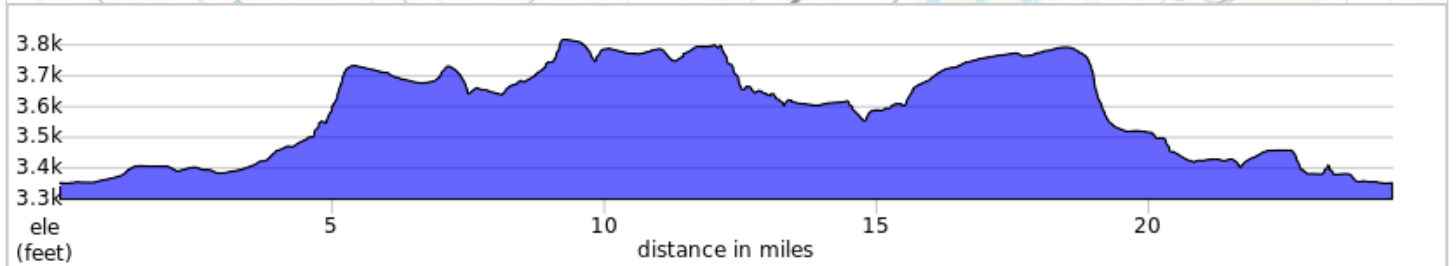
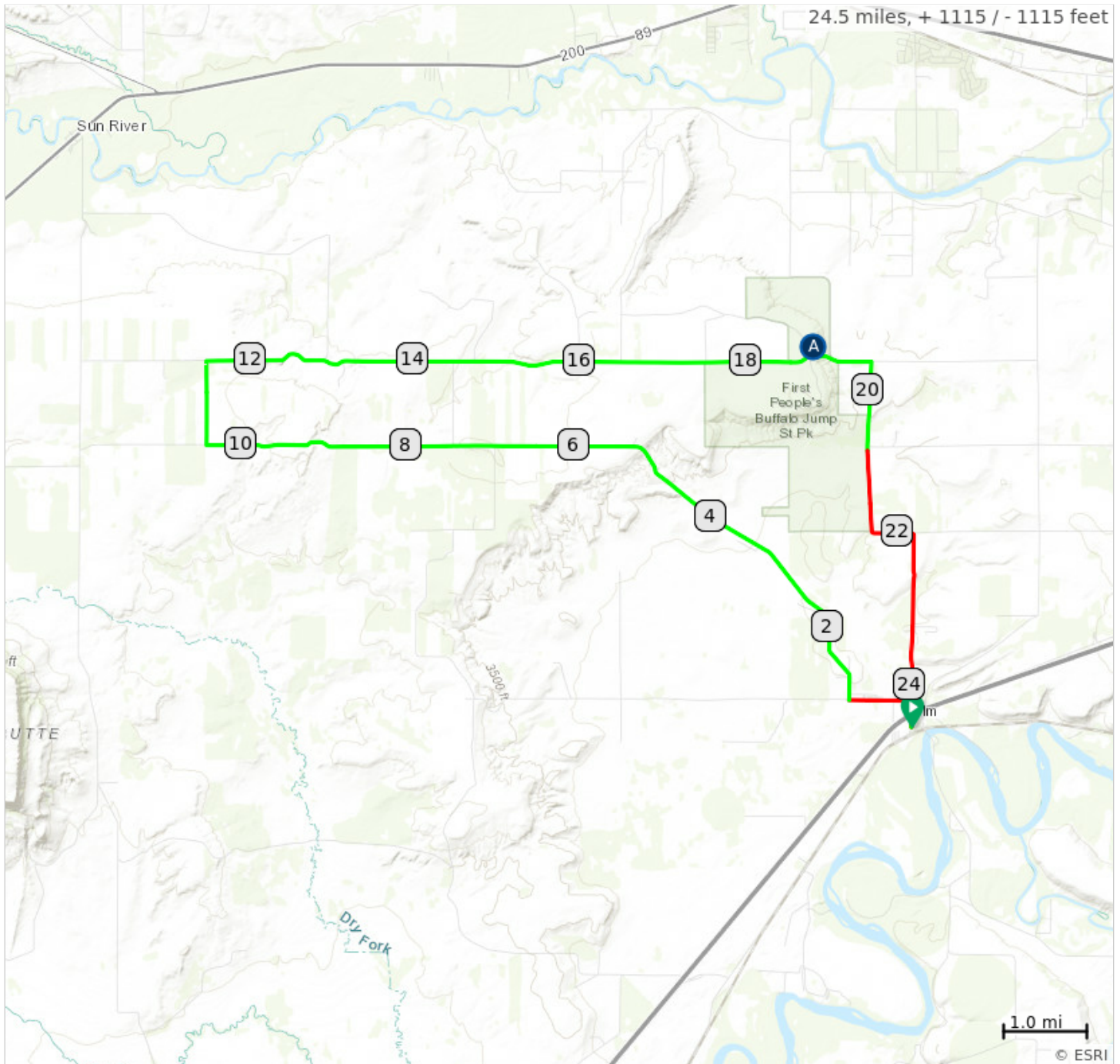


# Ulm bench 25



Ulm post office start/finish  
Mile 18.7 Ulm/Pishkun

## A. STEEP DH



## Ulm bench 25

1.	0.0	0.0	📍	Start of route
2.	0.2	0.2	↑	Continue onto Ulm Vaughn Rd
3.	0.3	0.1	←	Left onto Ulm W Rd
4.	1.1	0.8	→	Right onto Luebbe Rd
5.	10.4	9.4	→	Right onto Weber Rd
6.	11.4	1.0	→	Right onto Goetz Rd
7.	19.2	7.7	↑	Continue onto Ulm Vaughn Rd
8.	19.6	0.4	→	Right to stay on Ulm Vaughn Rd
9.	24.3	4.7	↑	Continue onto Millegan Rd
10.	24.5	0.2	📍	End of route

24.5 miles. +1108/-1108 feet